

Install Guide

5 MIN INSTALL

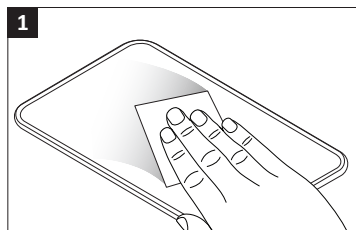


Prepare:

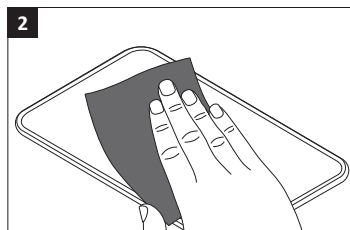
- Remove all supplies from package
- Work in a clean, well-lit environment
- Remove any accessories from device (cases, battery packs, etc.)
- Watch video: eyesafe.com/install

SUPPLIES:

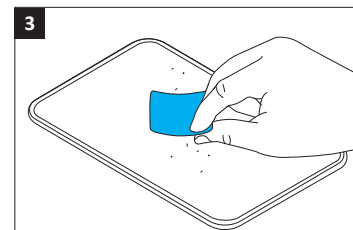
- 1x Screen Filter
- 1x Microfiber Cloth
- 2x Screen Cleaning Wipes
- 3x Dust Removers



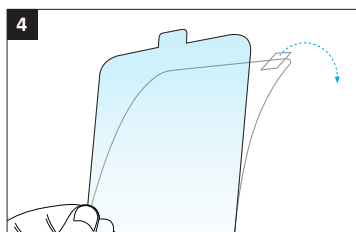
1 Use the **Screen Cleaning Wipe** to remove smudges and dust particles from your device.



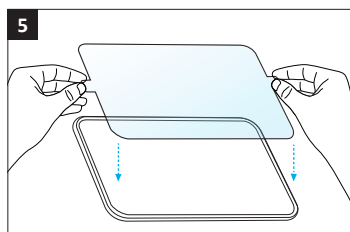
2 Dry the screen with the **Microfiber Cloth**.



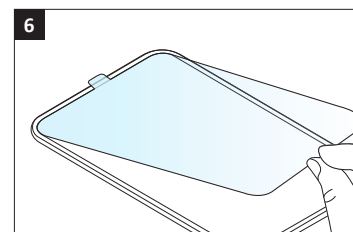
3 Use the **Dust Removers** across the entire screen. Take your time to remove all dust particles.



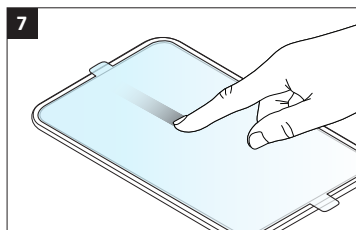
4 While holding the **Screen Filter** remove the adhesive backer by pulling tab at the top.



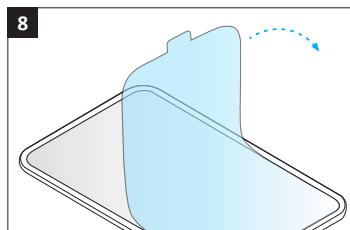
5 Hold the tabs and visually align the **Filter** above your device.



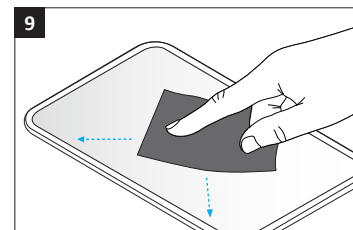
6 Once aligned, carefully place the **Screen Filter** onto the device.



7 Swipe your thumb or finger down the middle of the **Filter** to apply the adhesive.



8 Once the adhesive has spread out across the entire display carefully remove the **Top Mask**.



9 If there are any remaining air bubbles, use your **Microfiber Cloth** and thumb to press outwards to the nearest edge.