

eyesafe®

Install Guide

SUPPLIES:

1x Screen Filter

1x Microfiber Cloth

2x Screen Cleaning Wipes

3x Dust Removers

1x Alignment Tray

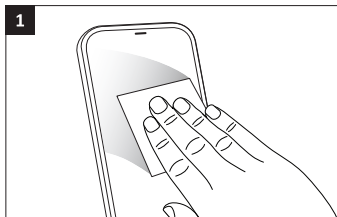
5 MIN INSTALL



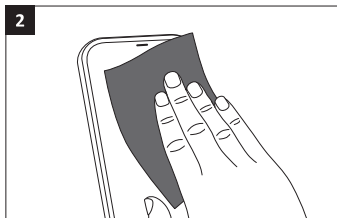
TEMPERED GLASS

Prepare:

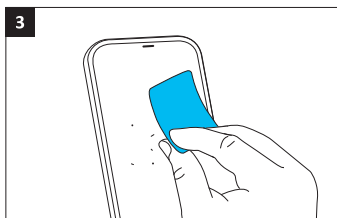
- Remove all supplies from package
- Work in a clean, well-lit environment
- Remove any accessories from device (cases, battery packs, etc.)
- Watch video: eyesafe.com/install



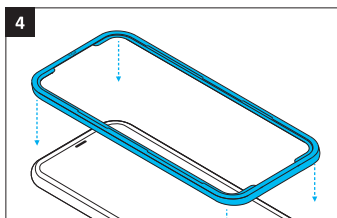
Use the **Screen Cleaning Wipe** to remove smudges and dust particles from your device.



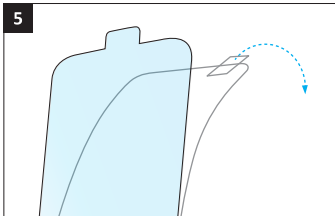
Dry the screen with the **Microfiber Cloth**.



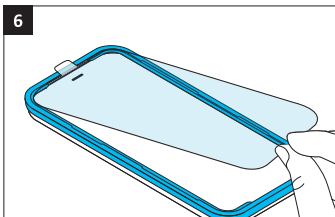
Use the **Dust Removers** across the entire screen. Take your time to remove all dust particles.



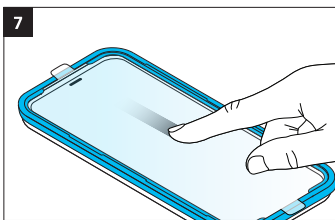
Place the **Alignment Tray** on your device. Be sure the "TOP" is aligned with the top of your device.



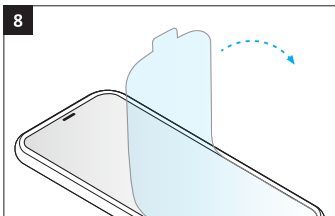
Remove the adhesive backer from the **Screen Filter** by pulling tab at top.



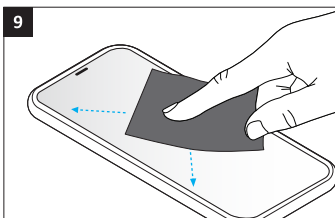
Carefully place the **Screen Filter** onto the **Alignment Tray**.



Swipe your thumb or finger down the middle of the **Filter** to apply the adhesive.



Carefully remove the **Top Mask** and **Alignment Tray**.



If there are any remaining air bubbles, use your **Microfiber Cloth** and thumb to press outwards to the nearest edge.

Congratulations! Your device is now Eyesafe®



WHAT'S NEXT?

Talk to your eye care professional about eye health and your vision concerns.

EYESAFE® BLUE LIGHT SCREEN FILTERS FOR WORK AND HOME:



SMARTPHONE



TABLET



LAPTOP



MONITOR

LOOK FOR EYESAFE®

Eyesafe® Certified low blue light laptops and monitors are available from Dell, HP, Lenovo, and Acer. Visit eyesafe.com/products to learn more.

eyesafe.com