

# eyesafe®

## Install Guide

### SUPPLIES:

- 1x Screen Filter
- 1x Microfiber Cloth
- 2x Screen Cleaning Wipes
- 3x Dust Removers
- 1x Alignment Tray
- 1x Squeegee

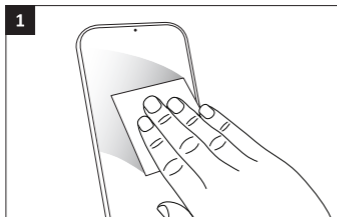
5 MIN INSTALL



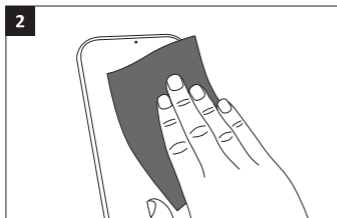
ENGINEERED GLASS

## Prepare:

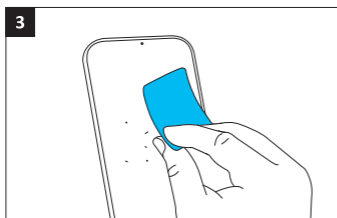
- Remove all supplies from package
- Work in a clean, well-lit environment
- Remove any accessories from device (cases, battery packs, etc.)
- Watch video: [eyesafe.com/install](https://eyesafe.com/install)



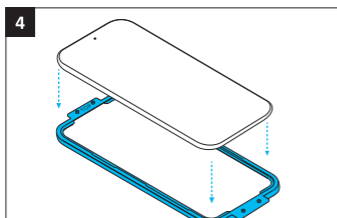
Use the **Screen Cleaning Wipe** to remove smudges and dust particles from your device.



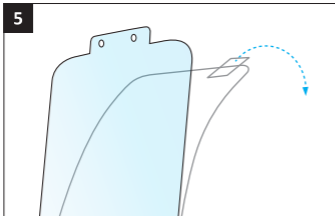
Dry the screen with the **Microfiber Cloth**.



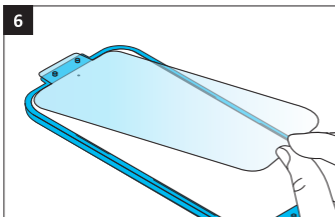
Use the **Dust Removers** across the entire screen. Take your time to remove all dust particles.



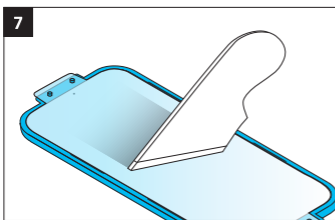
Place your device on the **Alignment Tray**. Be sure the "TOP" is aligned with the top of your device.



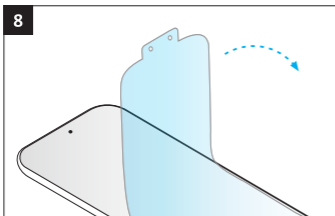
Remove the adhesive backer from the **Screen Filter** by pulling tab at top.



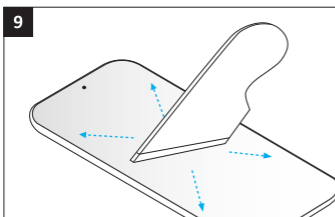
Carefully place the **Screen Filter** onto the **Alignment Tray** using the alignment pins as guides.



While pressing firmly, and using one continuous motion, **Squeegee** from the bottom of the filter towards the top. Then squeegee down any of the edges for curved display.



Carefully remove the **Top Mask** and **Alignment Tray**.



For any remaining air bubbles, press gently with the **Squeegee** and work the air towards the nearest edge.

# Congratulations! Your device is now Eyesafe®



## WHAT'S NEXT?

Talk to your eye care professional about eye health and your vision concerns.

## EYESAFE® BLUE LIGHT SCREEN FILTERS FOR WORK AND HOME:



SMARTPHONE



TABLET



LAPTOP



MONITOR

## LOOK FOR EYESAFE®

Eyesafe® Certified low blue light laptops and monitors are available from Dell, HP, Lenovo, and Acer. Visit [eyesafe.com/products](https://eyesafe.com/products) to learn more.

[eyesafe.com](https://eyesafe.com)