



Install Guide

SUPPLIES:

- 1x Screen Filter
- 1x Microfiber Cloth
- 2x Screen Cleaning Wipes
- 3x Dust Removers
- 1x Squeegee

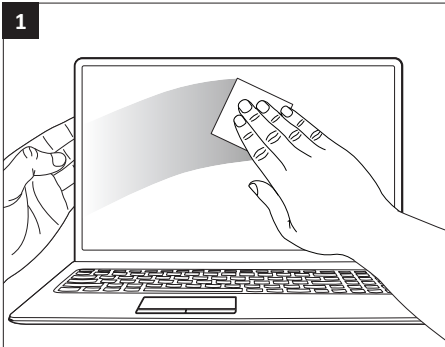
5 MIN INSTALL



Prepare:

- ☐ Remove all supplies from package
- ☐ Work in a clean, well-lit environment
- ☐ Watch the video: eyesafe.com/install

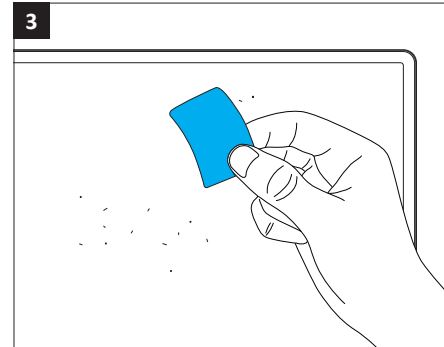
Clean



Use the **Screen Cleaning Wipe** to remove smudges and dust particles.

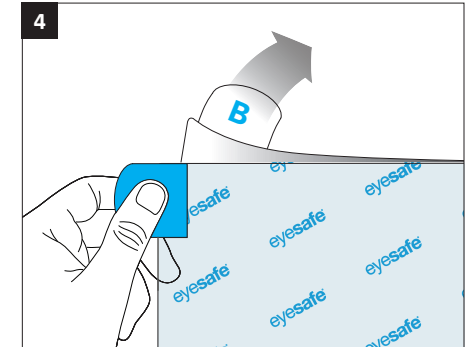


Dry the screen with the **Microfiber Cloth**.

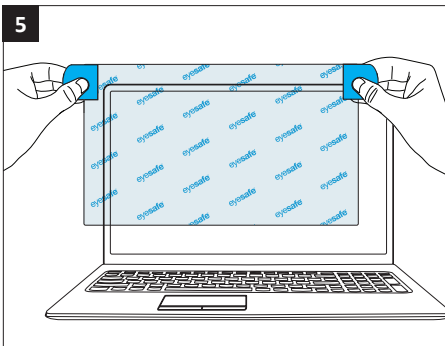


Use the **Dust Remover Stickers** across the entire screen. Take your time to remove all dust particles.

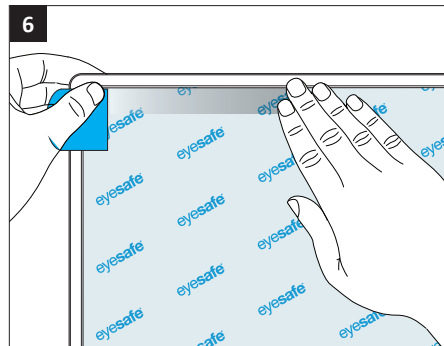
Apply



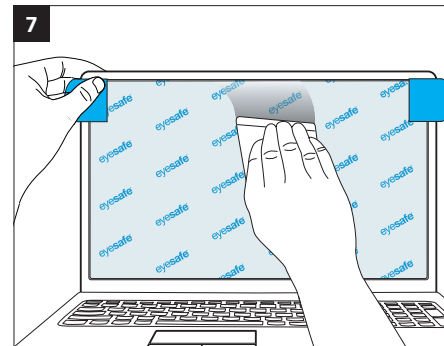
Find the **Filter**. Hold **Tab A**. Carefully pull **Tab B** to peel away clear backing.



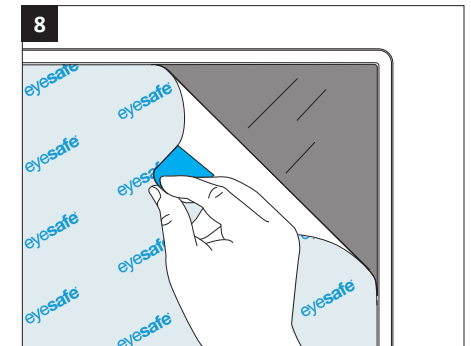
Holding **Tabs A and C**, align the **Filter** to each corner and the top edge of your screen.



Press firmly along top edge. Allow the **Filter** to adhere to the entire surface of your screen.



Use the **Squeegee** and with smooth downward strokes, push bubbles to edges. Caution: pressing too hard will damage the filter.



Pull **Tab C** to remove top mask. Press out remaining bubbles with your thumb. Use the **Microfiber Cloth** to remove fingerprints.



Congratulations!

Your device is now Eyesafe®



WHAT'S NEXT?

Talk to your eye care professional about eye health and your vision concerns.

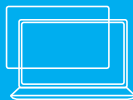
EYESAFE® BLUE LIGHT SCREEN FILTERS FOR WORK AND HOME:



SMARTPHONE



TABLET



LAPTOP



MONITOR

LOOK FOR EYESAFE®

Eyesafe® Certified low blue light laptops and monitors are available from Dell, HP, Lenovo, and Acer. Visit eyesafe.com/products to learn more.

eyesafe.com

R012521