

Quick Start:
5 min install
video



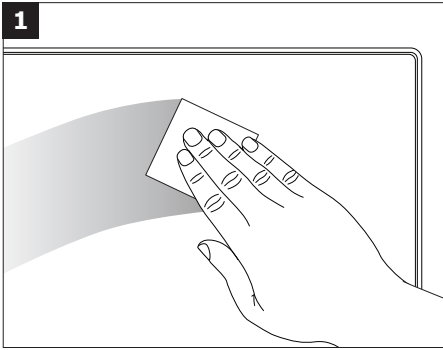
Supplies:

- 1x Screen Protector
- 1x Microfiber Cloth
- 2x Screen Cleaning Wipes
- 3x Dust Removers
- 1x Anti-static Wipe
- 1x Squeegee

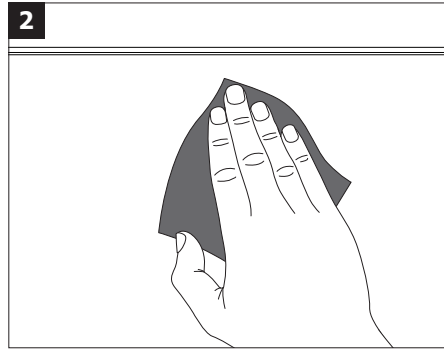
Prepare:

- Remove all supplies from package
- Work in a clean, well-lit environment
- Power off and unplug device
- Remove any accessories from monitor
- Watch video: eyesafe.com/install

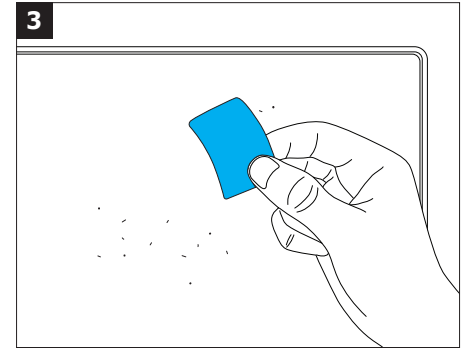
Clean



Use the **Screen Cleaning Wipe** to remove smudges and dust particles.

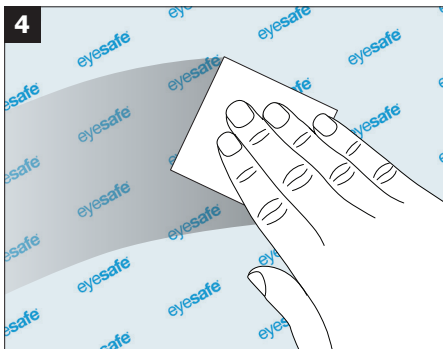


Dry the screen with the **Microfiber Cloth**.

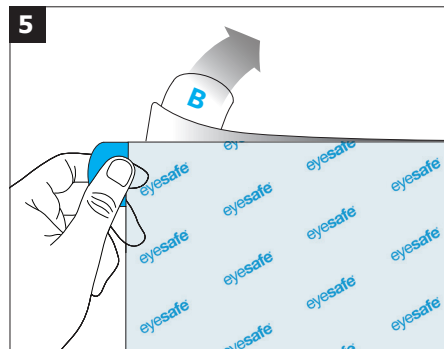


Use the **Dust Remover Stickers** across the entire screen. Take your time to remove all dust particles.

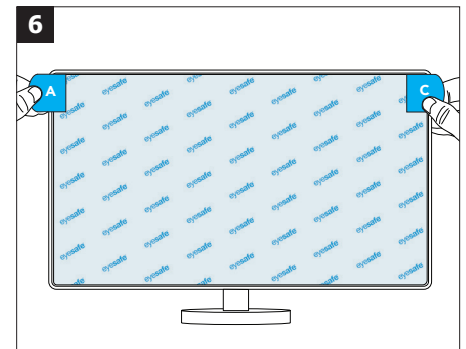
Apply



Use the **Anti-static Wipe** across the entire **Screen Protector** front and back.

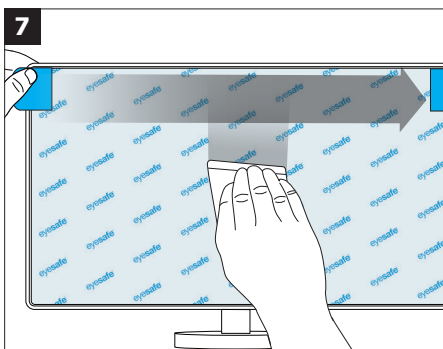


On the **Screen Protector**, Hold **Tab A**. Carefully pull **Tab B** to peel away clear backing.

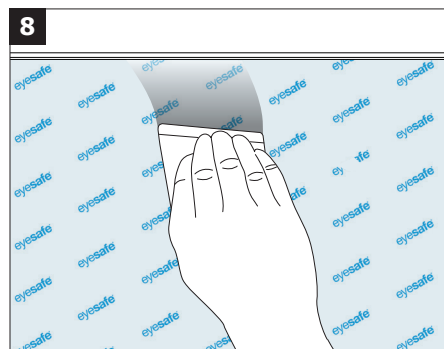


Holding **Tabs A and C**, align the **Screen Protector** by centering it over the live area of your display. This may require powering your screen on.

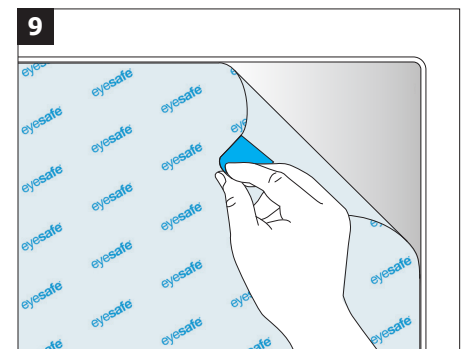
Finish



Squeegee along the top edge and down the center of your screen. Allow the **Screen Protector** to adhere to the entire surface. Power off the screen if it was powered on in Step 6.



Use the **Squeegee** and with smooth downward strokes, push bubbles to edges. Caution: pressing too hard will damage the screen protector.



Pull **Tab C** to remove top mask. Press out remaining bubbles with your thumb. Use the **Microfiber Cloth** to remove fingerprints.